

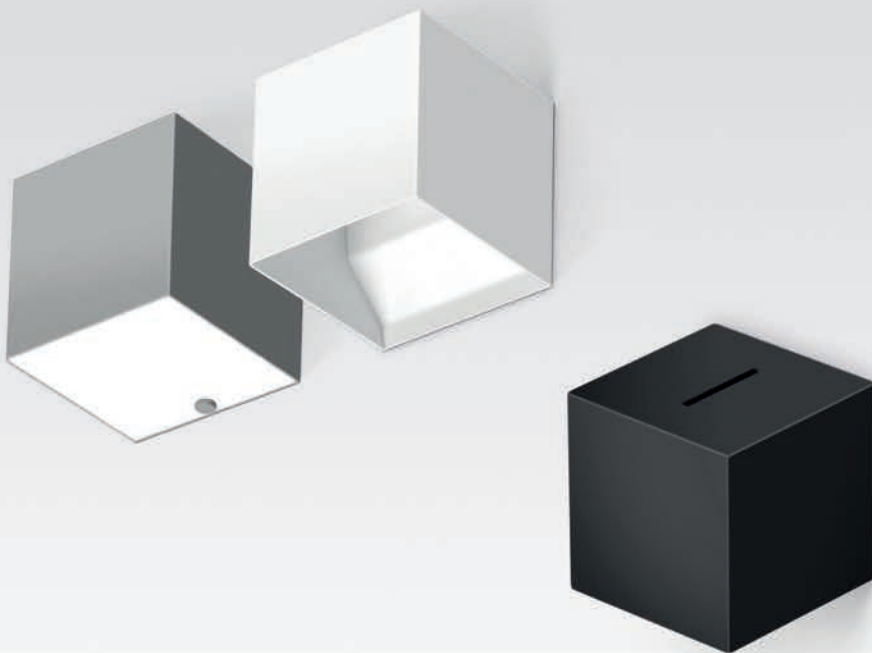
# VISA

## DOWNLIGHTS



Norms  
EN 60598-1, EN 60598-2-1





Body: Steel sheet.  
Finish: Powder coated.  
Light source: QT-14 (G9) lamp.



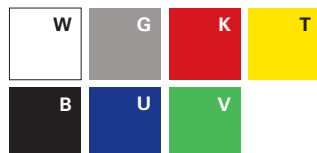
Direct/Indirect 90° + 90° beam angle

	LAMP*		W	AxBxC (mm)	Kg	ORDER CODE
	QT-14	G9	max.60	110x110x110	0,8	90028.S160.0.0090

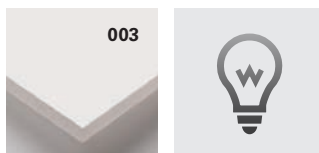
Direct/Indirect 90° + 5° beam angle

	LAMP*		W	AxBxC (mm)	Kg	ORDER CODE
	QT-14	G9	max.60	110x110x110	0,8	90028.S160.0.0005

### COLOUR/FINISH



### OPTIONS



Opal polycarbonate diffuser

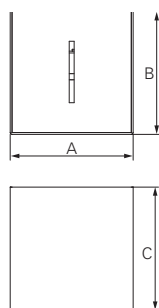
Lamps as optional

### DETAILS



Opal polycarbonate diffuser detail

### DIMENSIONS



#### TO SPECIFY:

Wall mounted direct/indirect luminaire, suitable for halogen lamps, with different light beam effect on walls. Optional opal polycarbonate diffuser and white, grey, black, red, yellow, green or blue finish - as Roxo Lighting VISA.

