

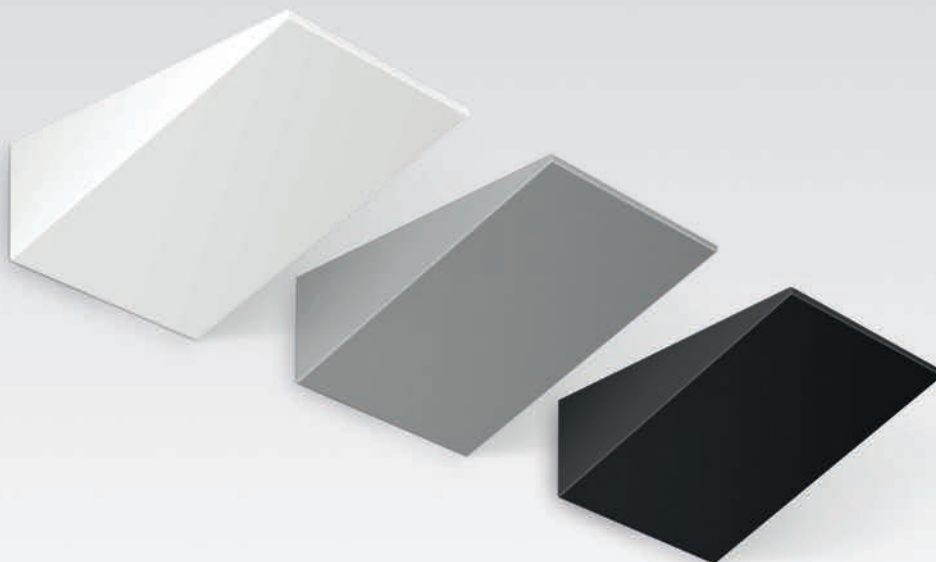
VELA

DOWNLIGHTS

Norms
EN 60598-1, EN 60598-2-1



Body: Steel sheet.
Finish: Powder coated.
Light Source: TC-DEL (G24q-1/G24q-2/
G24q-3) lamp or TC-TEL (GX24q-3) lamp
or CDM-TD (RX7s) lamp.
Control Gear: Electronic equipment
220-240VAC-50/60Hz.

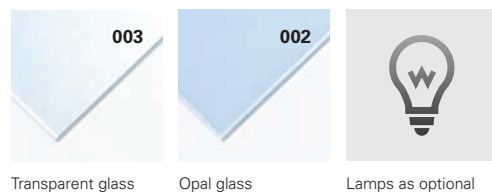


LAMP*		W	AxBxC (mm)	Kg	HF	DSI	DALI
TC-DEL	G24q-1	1x13	240x335x115	2,5	90048.D113.A	90048.D113.C	90048.D113.D
	G24q-2	1x18	240x335x115	2,5	90048.E118.A	90048.E118.C	90048.E118.D
	G24q-3	1x26	240x335x115	2,5	90048.F126.A	90048.F126.C	90048.F126.D
TC-TEL	GX24q-3	1x26	240x335x115	2,5	90048.I126.A	90048.I126.C	90048.I126.D
	GX24q-3	1x32	240x335x115	2,5	90048.I132.A	90048.I132.C	90048.I132.D
CDM-TD	RX7s	70	240x335x115	2,6	90048.O170.A	--	--

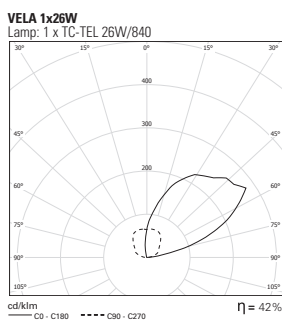
COLOUR/FINISH



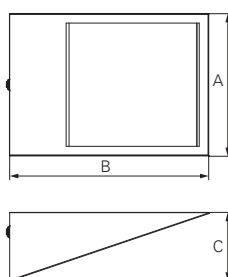
OPTIONS



PHOTOMETRY



DIMENSIONS



TO SPECIFY:

Wall mounted slim upright luminaire with indirect lighting effect. Single TC-DEL/TC-TEL or Metal halide lamp - as Roxo Lighting VELA.