

TMR

BATTENS AND TRUNKING SYSTEMS

Norms
EN 60598-1, EN 60598-2-1



Body: Steel sheet.
Finish: Powder coated in white matt (RAL9016).
Control Gear: Electronic equipment
220-240VAC-50/60Hz.

LAMP*	Icon	W	η(%)	AxBxC (mm)	Kg	HF	DSI	DALI
T5	G5	1x14	99	584x34x60	0,9	9N1W.114.56.A4	--	--
	G5	1x24	99	584x34x60	0,9	9N1W.124.56.A4	--	--
	G5	1x28	99	1184x34x60	1,2	9N1W.128.56.A4	9N1W.128.56.84	9N1W.128.56.74
	G5	1x35	98	1484x34x60	1,4	9N1W.135.56.A4	9N1W.135.56.84	9N1W.135.56.74
	G5	1x49	97	1484x34x60	1,4	9N1W.149.56.A4	9N1W.149.56.84	9N1W.149.56.74
	G5	1x54	99	1184x34x60	1,2	9N1W.154.56.A4	9N1W.154.56.84	9N1W.154.56.74
	G5	1x80	97	1484x34x60	1,4	9N1W.180.56.A4	9N1W.180.56.84	9N1W.180.56.74
	G5	2x14	-	584x67x60	1	9N1W.214.56.A4	--	--
	G5	2x24	-	584x67x60	1	9N1W.224.56.A4	--	--
	G5	2x28	-	1184x67x60	1,3	9N1W.228.56.A4	9N1W.228.56.84	9N1W.228.56.74
	G5	2x35	-	1484x67x60	1,5	9N1W.235.56.A4	9N1W.235.56.84	9N1W.235.56.74
	G5	2x49	-	1484x67x60	1,5	9N1W.249.56.A4	9N1W.249.56.84	9N1W.249.56.74
	G5	2x54	-	1184x67x60	1,3	9N1W.254.56.A4	9N1W.254.56.84	9N1W.254.56.74
	G5	2x80	-	1484x67x60	1,5	9N1W.280.56.A4	9N1W.280.56.84	9N1W.280.56.74

OPTIONS



Connector 3-pole
mini wieland
GST15i3 male



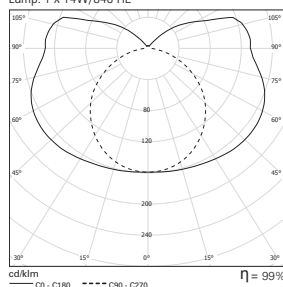
Connector 3-pole
mini wieland GST15i3
male + 1m cable with
3-pole mini wieland
GST15i3 female



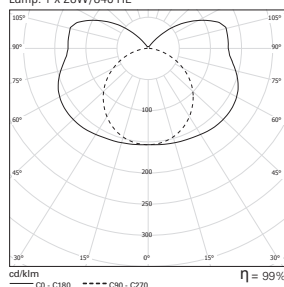
Lamps as optional

PHOTOMETRY

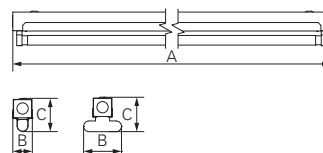
TMR 1x14W
Lamp: 1 x 14W/840 HE



TMR 1x28W
Lamp: 1 x 28W/840 HE



DIMENSIONS



TO SPECIFY:

Slim single or twin batten for 14/24/28/35/49/54/80W T5(G5)
fluorescent lamps. Optional connectors and dimmable
version available – as Roxo Lighting TMR.