

TML

ALUMINIUM PROFILE SYSTEMS


Norms
EN 60598-1, EN 60598-2-1




Body: Extruded aluminium profile.
Finish: Anodised in natural colour.
Light source: T5 (G5) lamp.
Wiring: 1,5m transparent current cable.
Control Gear: Electronic equipment,
220-240VAC-50/60Hz.

Please note: This luminaire is available only in suspended version.

DOP - Opal polycarbonate diffuser





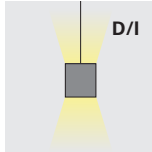

	LAMP*	UGR	W	η(%)	AxBxC (mm)	HF	DSI	DALI
	T5	≤22	2x28	54	1210x245x45	9RDD.228.21.A4	9RDD.228.21.84	9RDD.228.21.74
		≤22	2x35	54	1510x245x45	9RDD.235.21.A4	9RDD.235.21.84	9RDD.235.21.74
		≤22	2x49	51	1510x245x45	9RDD.249.21.A4	9RDD.249.21.84	9RDD.249.21.74
		≤22	2x54	51	1210x245x45	9RDD.254.21.A4	9RDD.254.21.84	9RDD.254.21.74

DAM - Microprismatic diffuser

	LAMP*	UGR	W	η(%)	AxBxC (mm)	HF	DSI	DALI
	T5	≤19	2x28	66	1210x245x45	9RDD.228.6V.A4	9RDD.228.6V.84	9RDD.228.6V.74
		≤19	2x35	66	1510x245x45	9RDD.235.6V.A4	9RDD.235.6V.84	9RDD.235.6V.74
		≤22	2x49	61	1510x245x45	9RDD.249.6V.A4	9RDD.249.6V.84	9RDD.249.6V.74
		≤22	2x54	63	1210x245x45	9RDD.254.6V.A4	9RDD.254.6V.84	9RDD.254.6V.74

Please note: Suspension type "I" or "Y" is required to complete the product. Please order separately.

OPTIONS

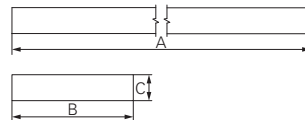
 910600	 910601	 970002	 K1	 D/I	
Suspension Type "I" (x4)	Suspension Type "Y" (x2)	Ceiling rose	Emergency unit 1 hour	Direct and indirect light with 60:40 ratio	Lamps as optional

DETAILS



Suspension Type "I" Suspension Type "Y"

DIMENSIONS



TO SPECIFY:

Suspended architectural T5(G5) luminaire with 45mm depth extruded aluminium profile, anodised in natural colour. Opal polycarbonate or microprismatic diffuser. Available with HF, DSI or DALI control gear. Optional direct/indirect version or 1 hour emergency – as Roxo Lighting TML.