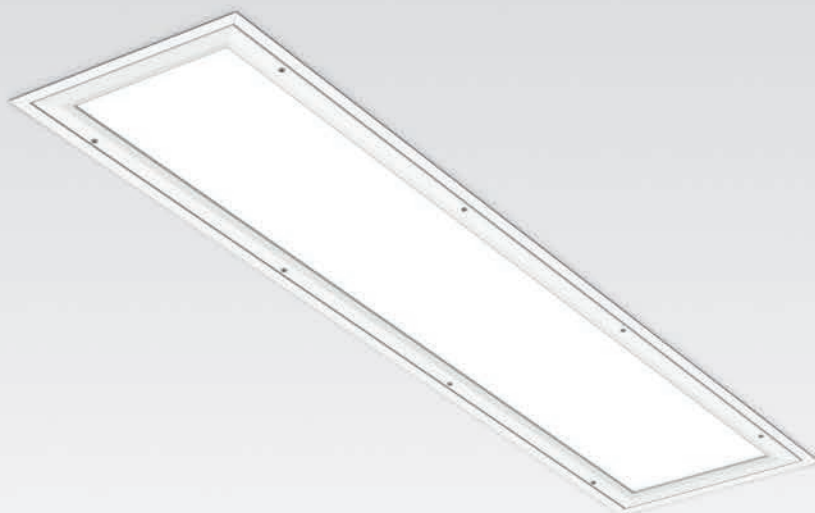


# TLP /E

## VANDAL RESISTANT



Norms  
EN 60598-1 , EN 60598-2-2



**Body:** Steel sheet.  
**Diffuser:** 3mm polycarbonate.  
**Finish:** Powder coated in white matt (RAL9016).  
**Control Gear:** Electronic equipment, 220-240VAC-50/60Hz.

### DOP - Opal polycarbonate diffuser

LAMP	W	AxBxC (mm)		HF	DSI	DALI
T5	2x28	1250x300x115	1226x276	965H.228.21.A4	965H.228.21.84	965H.228.21.74
	2x35	1550x300x115	1526x276	965H.235.21.A4	965H.235.21.84	965H.235.21.74
	2x49	1550x300x115	1526x276	965H.249.21.A4	965H.249.21.84	965H.249.21.74
	2x54	1250x300x115	1226x276	965H.254.21.A4	965H.254.21.84	965H.254.21.74
	2x80	1550x300x115	1526x276	965H.280.21.A4	965H.280.21.84	965H.280.21.74
	4x14	650x650x115	626x626	965H.414.21.A4	965H.414.21.84	965H.414.21.74
	4x24	650x650x115	626x626	965H.424.21.A4	965H.424.21.84	965H.424.21.74

### DPT - Transparent polycarbonate diffuser

LAMP	W	AxBxC (mm)		HF	DSI	DALI
T5	2x28	1250x300x115	1226x276	965H.228.7Z.A4	965H.228.7Z.84	965H.228.7Z.74
	2x35	1550x300x115	1526x276	965H.235.7Z.A4	965H.235.7Z.84	965H.235.7Z.74
	2x49	1550x300x115	1526x276	965H.249.7Z.A4	965H.249.7Z.84	965H.249.7Z.74
	2x54	1250x300x115	1226x276	965H.254.7Z.A4	965H.254.7Z.84	965H.254.7Z.74
	2x80	1550x300x115	1526x276	965H.280.7Z.A4	965H.280.7Z.84	965H.280.7Z.74
	4x14	650x650x115	626x626	965H.414.7Z.A4	965H.414.7Z.84	965H.414.7Z.74
	4x24	650x650x115	626x626	965H.424.7Z.A4	965H.424.7Z.84	965H.424.7Z.74

### OPTIONS



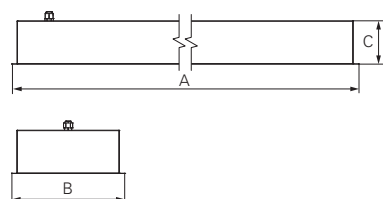
Emergency unit  
3 hours

Emergency unit  
1 hour

Steel safety cable

Lamps as optional

### DIMENSIONS



#### TO SPECIFY:

Recessed IP65 sealed luminaire for fluorescent T5(G5) 28/35/49/54/80W. Aluminium frame with tamperproof screws and transparent or opal polycarbonate diffuser designed to resist extreme physical impact (IK10). Optional 1 or 3 hours emergency – as Roxo Lighting TLP /E.